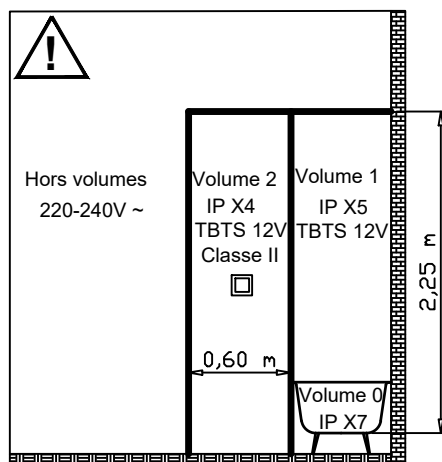
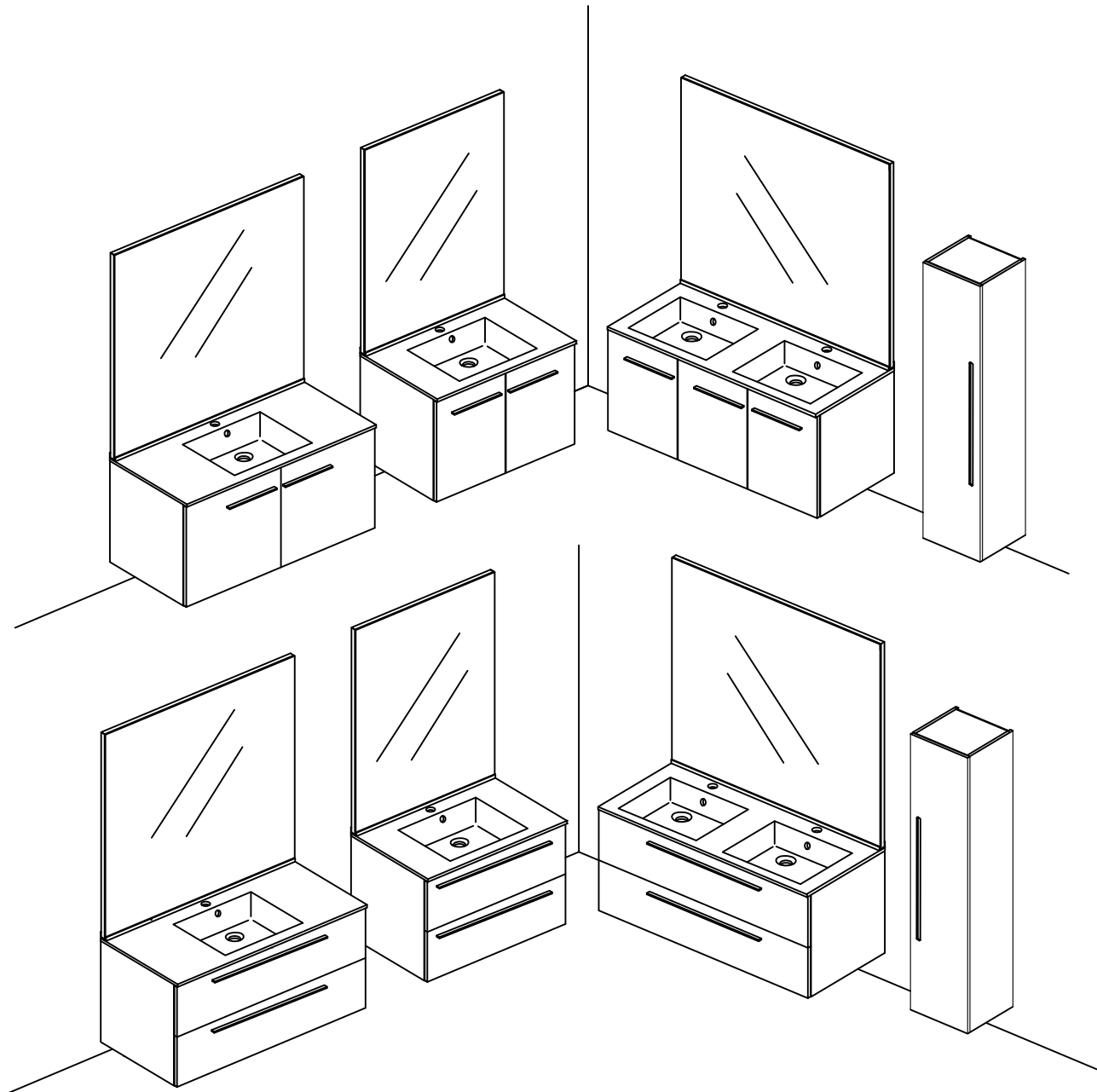


3029041

12092016 - 06 - 22032021

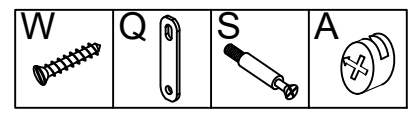
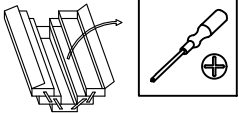
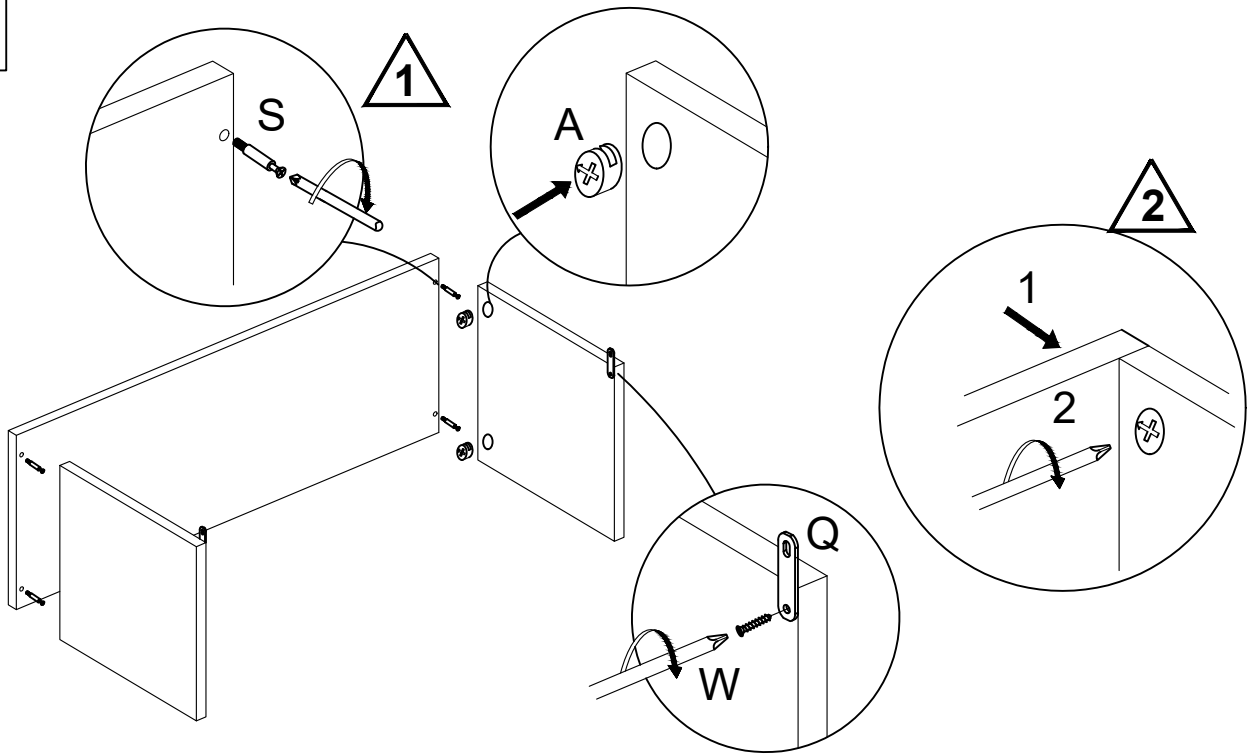


Précaution: couper le courant du circuit concerné ou de l'installation électrique lors du branchement

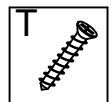
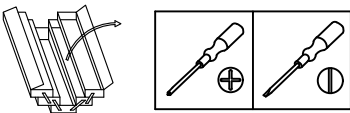
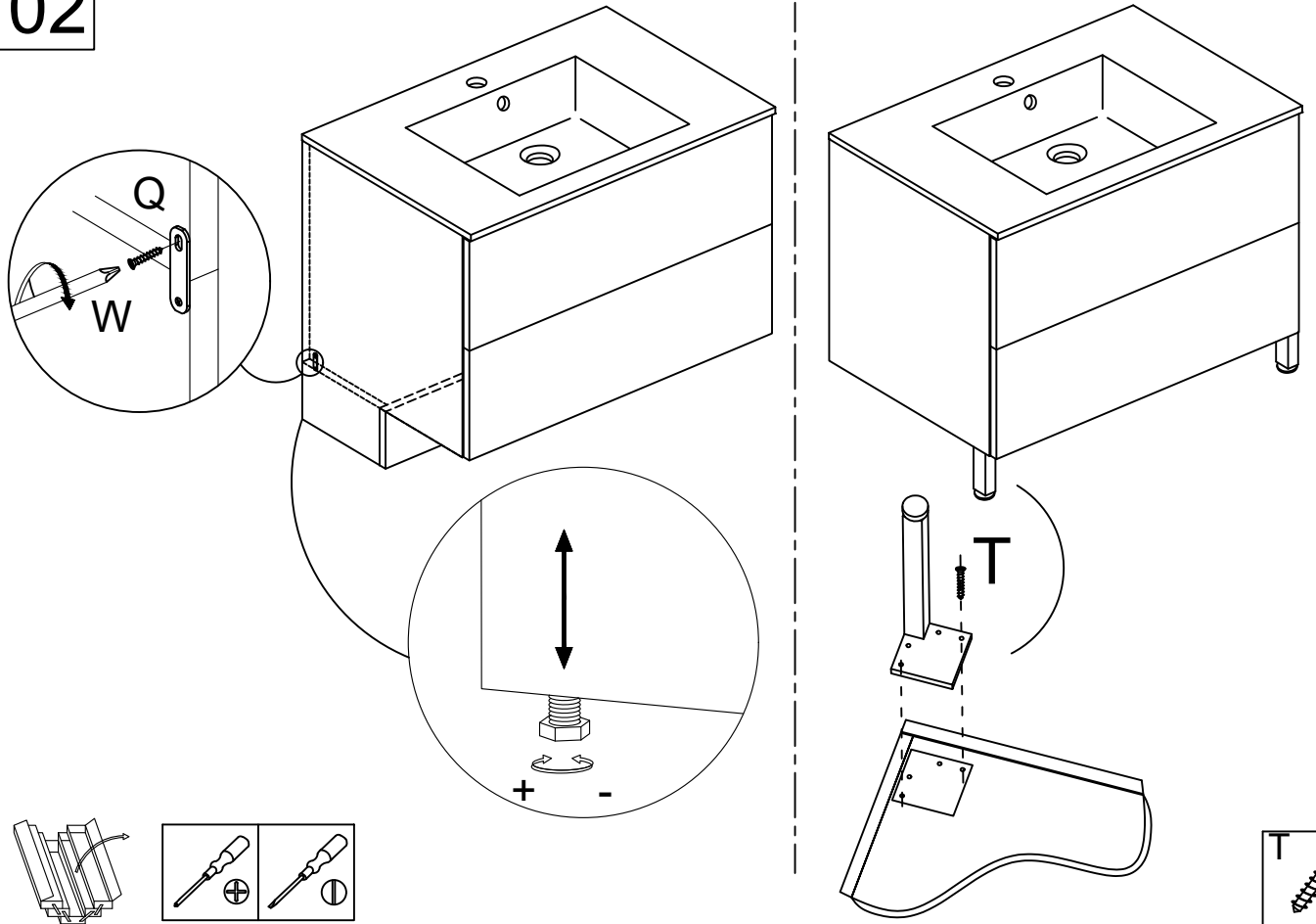
Cet appareil de classe II peut être installé dans les volumes 2 et Hors volumes de la salle de bains (en aucun cas, il ne peut être installé au dessus de la baignoire ou dans le volume du bac à douche).



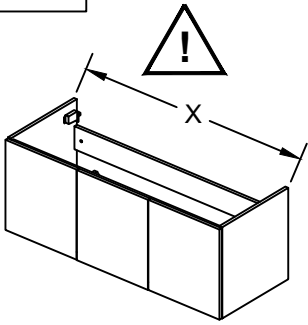
01



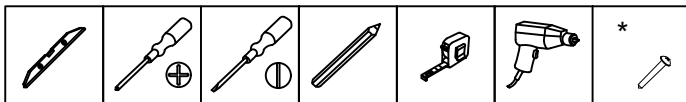
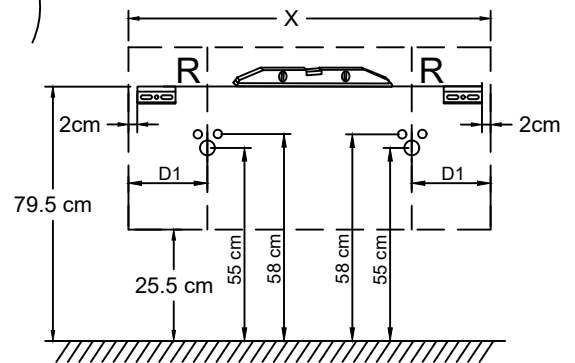
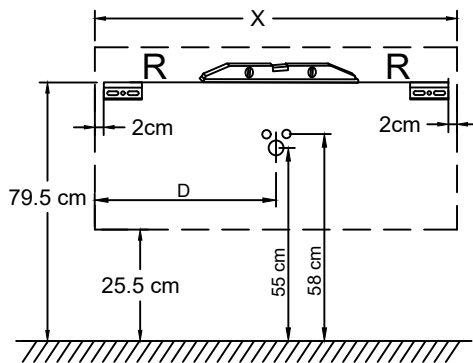
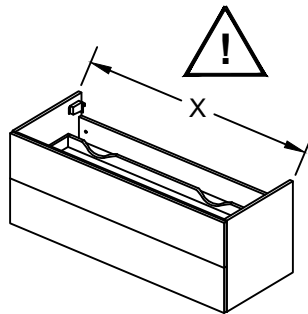
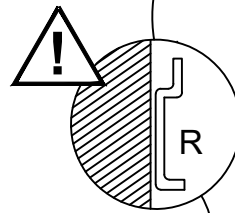
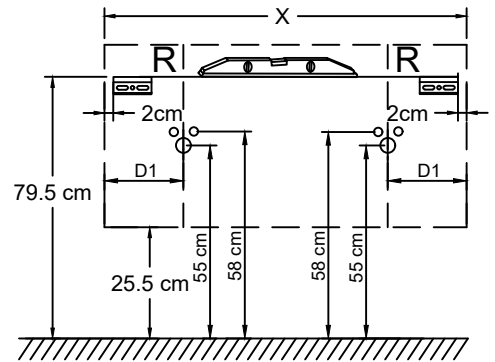
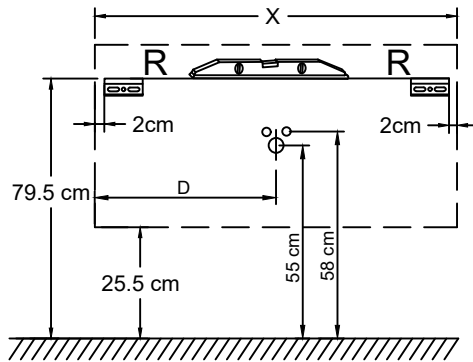
02



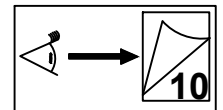
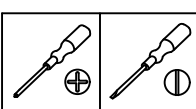
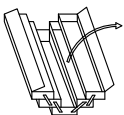
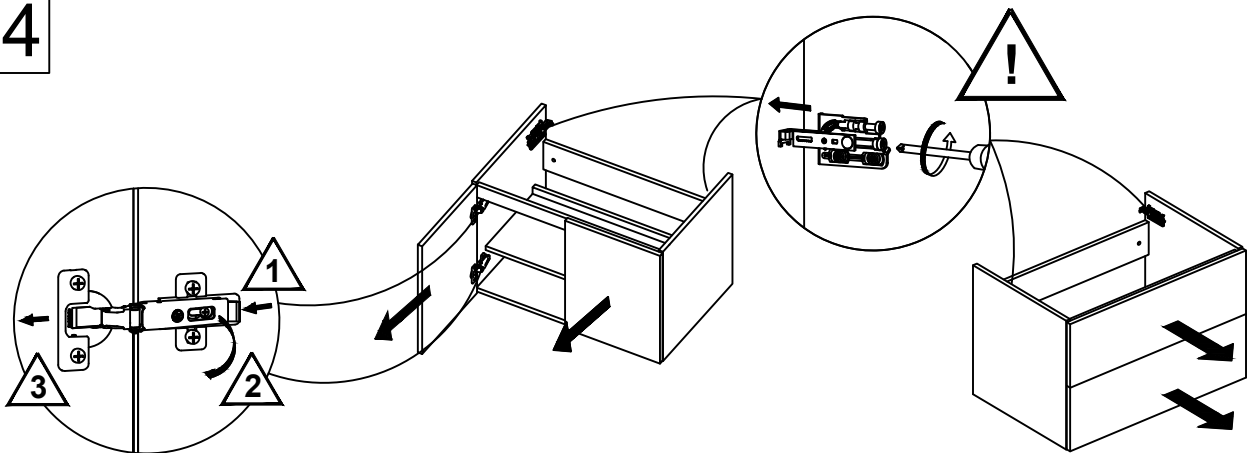
03



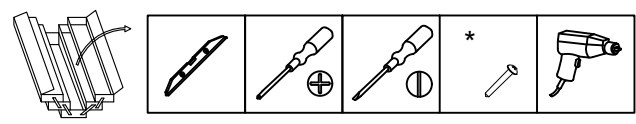
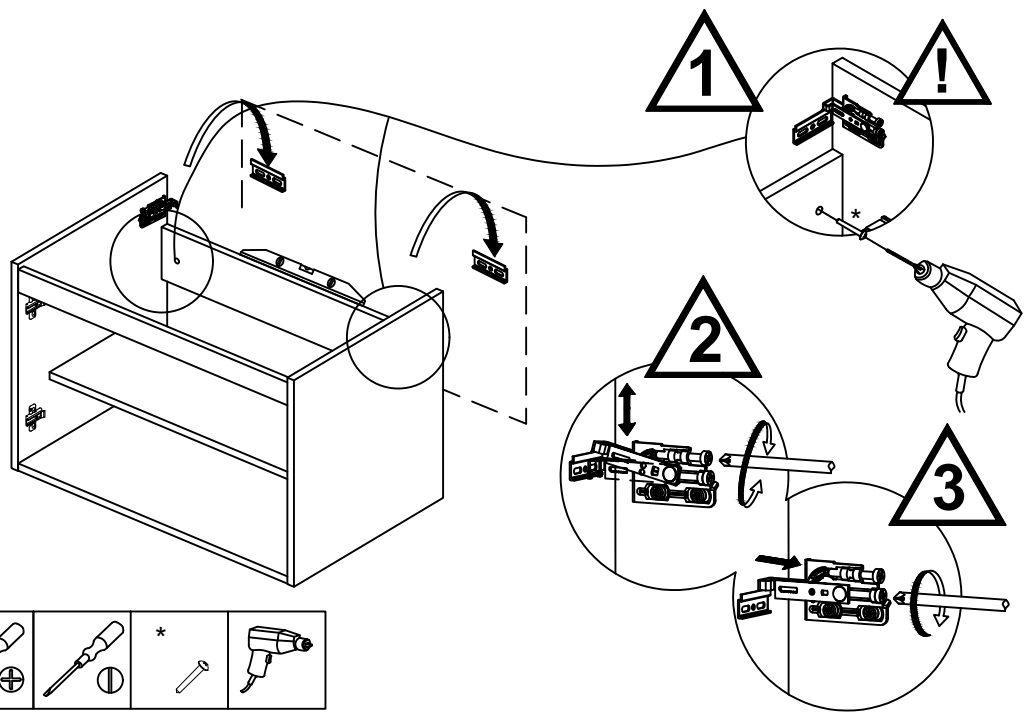
X	D	D1
60	60/2	
70	70/2	
80	80/2	
90	80/2	
100	100/2	
120		300



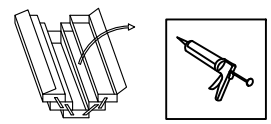
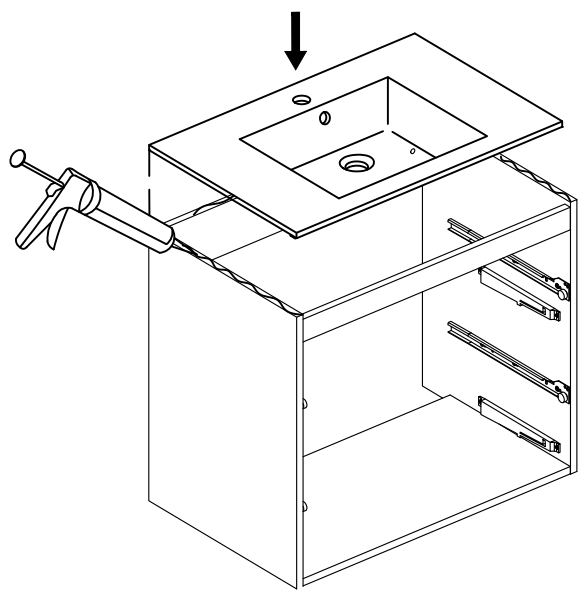
04



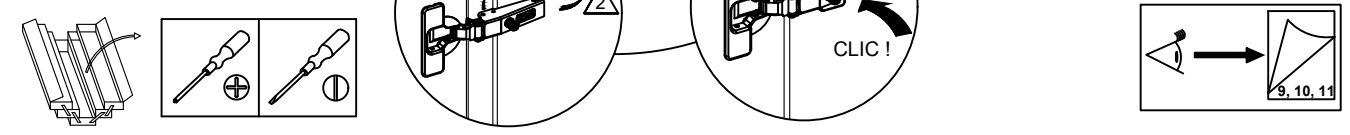
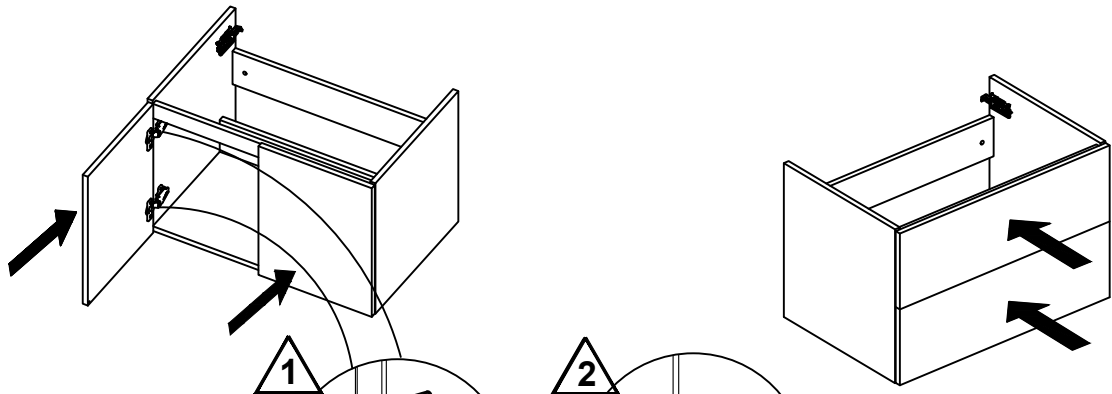
05



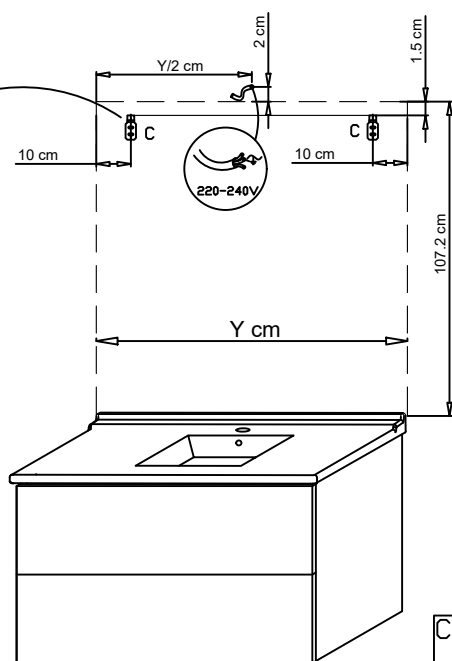
06



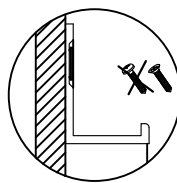
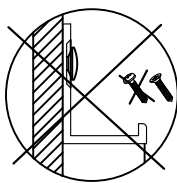
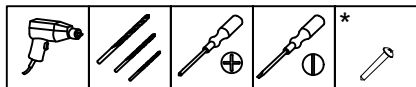
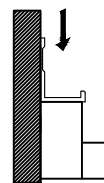
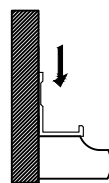
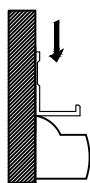
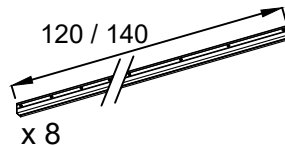
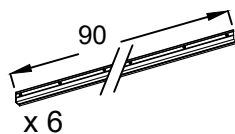
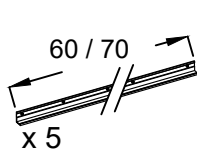
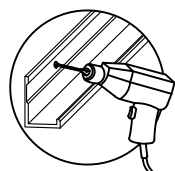
07



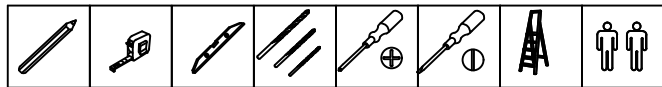
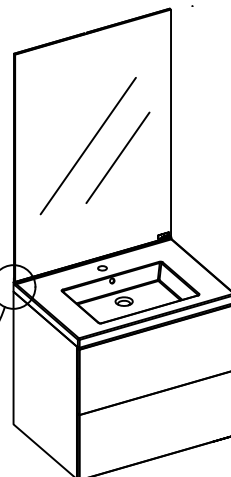
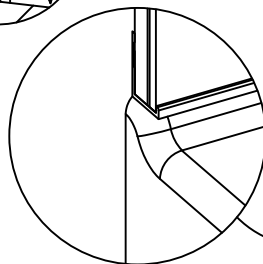
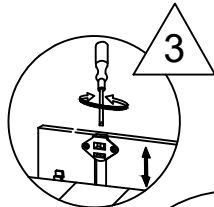
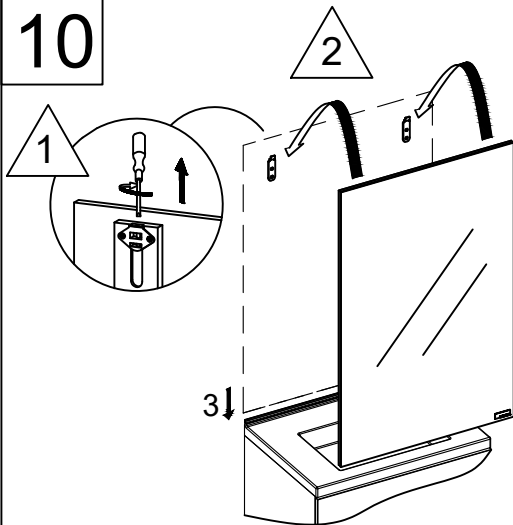
08



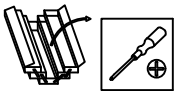
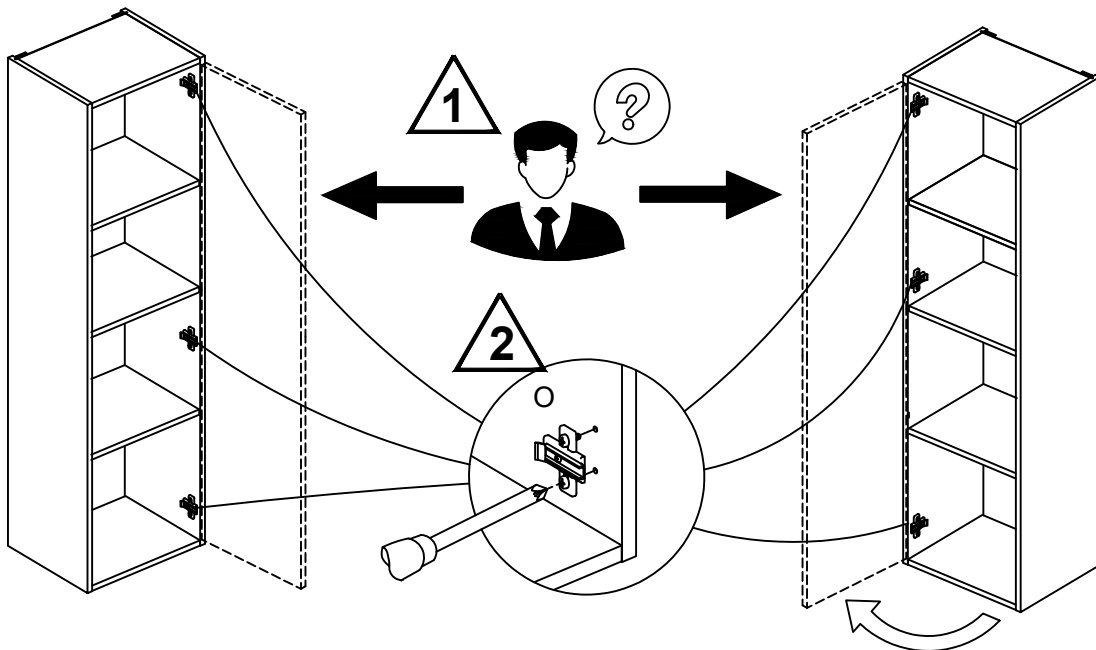
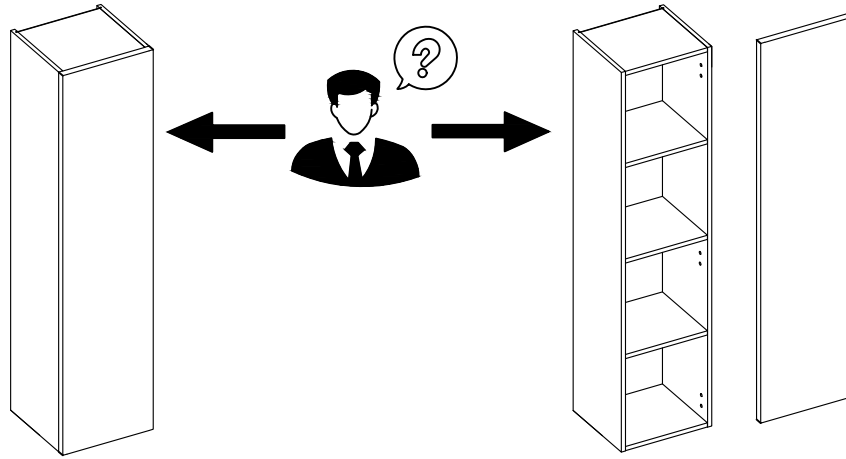
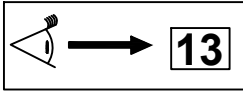
09



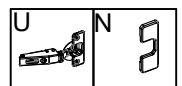
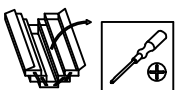
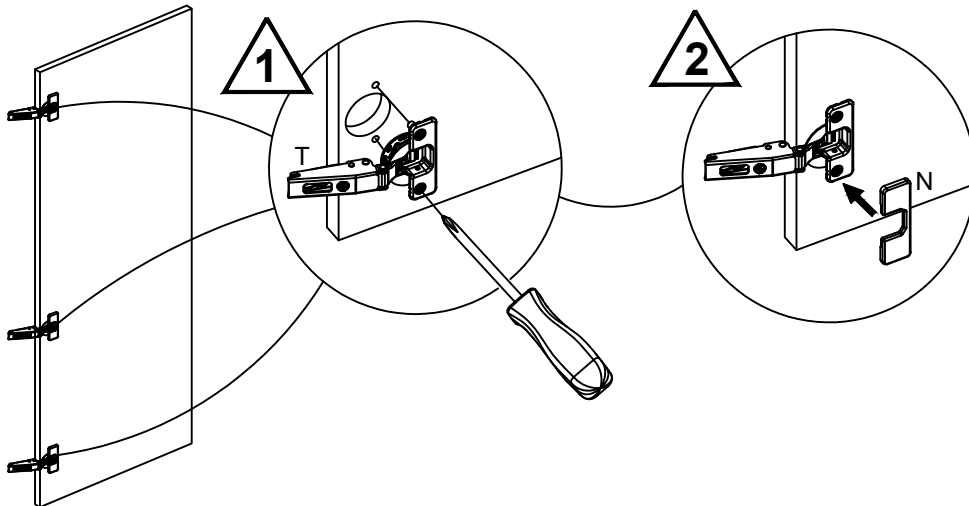
10



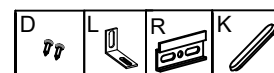
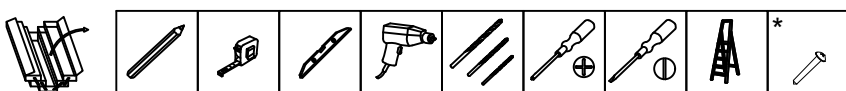
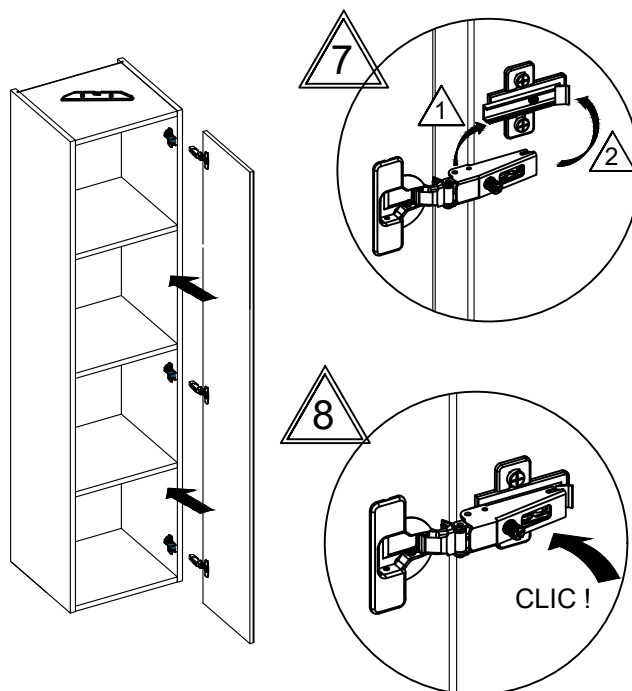
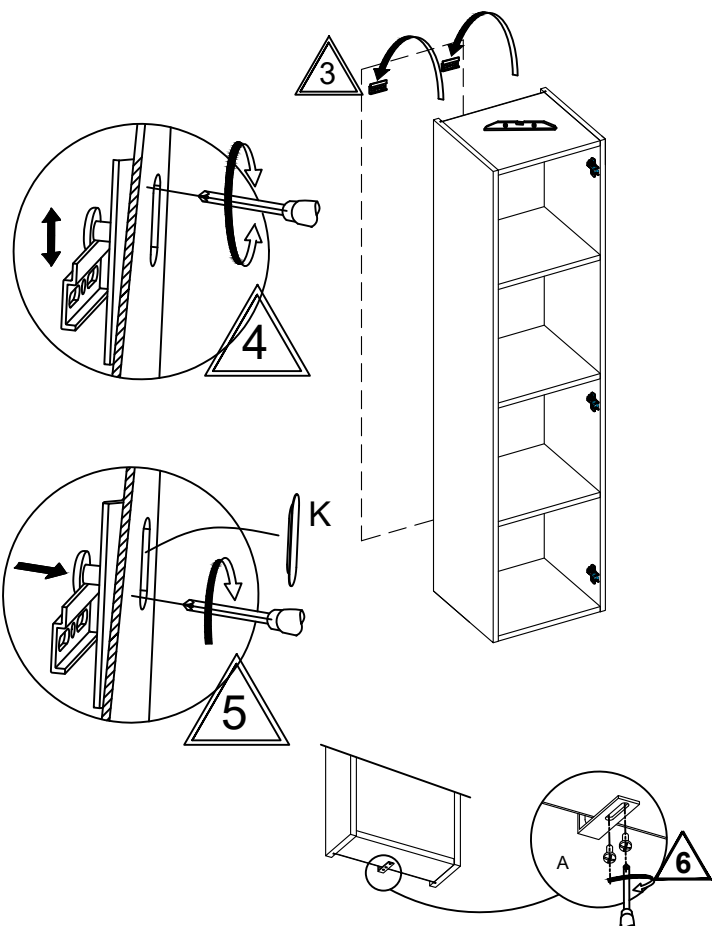
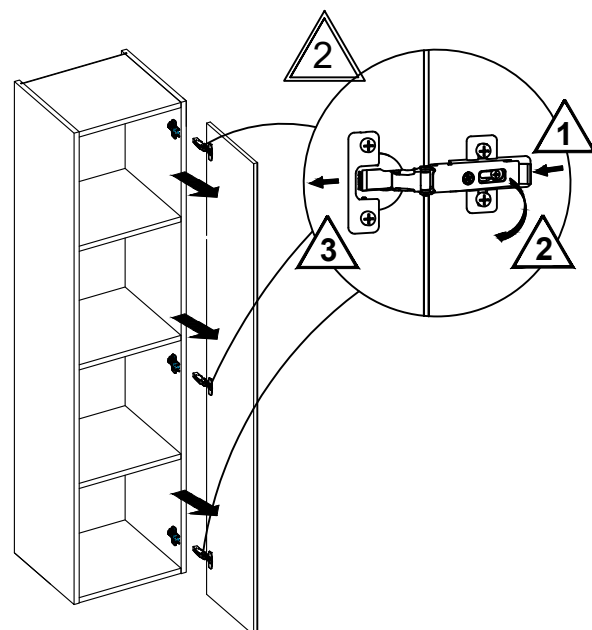
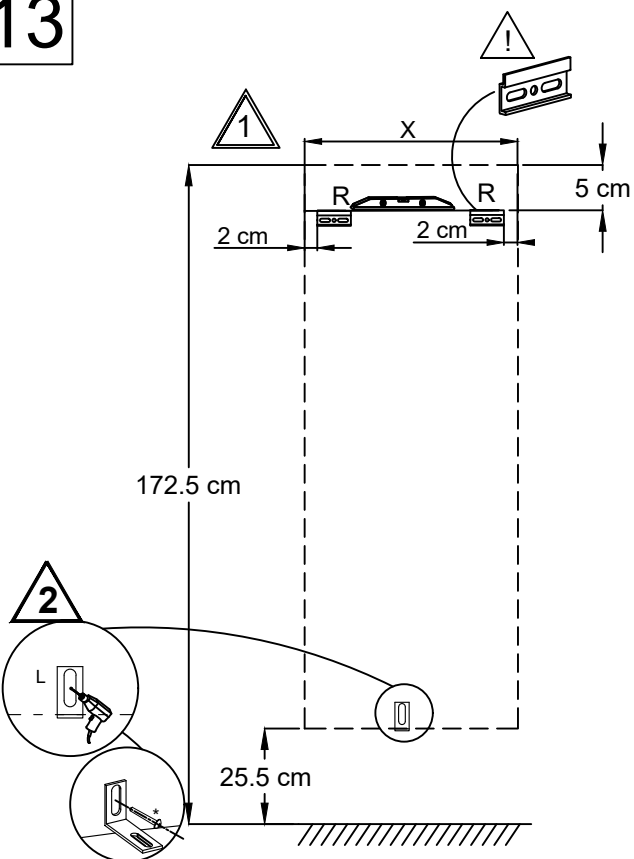
11



12



13



14

